

Oliver, Wyman & Co.

Resolution: 4 Architecture



The name of a building that you love

Because it acts as a beacon, for its pure and powerful location and scale, its iconic presence, and the everchanging lights,—the Empire State Building

A spot (corner, street, square, etc.) that you like

In the center of Times Square, in between 7th Avenue and Broadway, standing over the subway grates, listening to the eerie sounds of piped-in music from below

An adjective (or more than one) that describes the architectural spirit of the city

The architectural spirit of the city is repressed, as manifested by its buildings, yet the architectural spirit, as embodied by its architects who work here, is always emerging and regenerating itself

The name of an influential New York architect

Peter Eisenman

Architects: Resolution 4: Architecture

Photographers: Paul Warchol

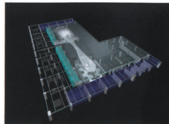
Construction date: 2000

Floor space: 30,000 square feet

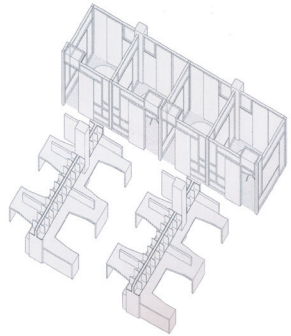
The design of the Park Avenue offices of a large financial consulting firm focused on integrating all the elements that constitute a work space into a unique and identifiable concept.

Starting in the entrance, the attention of the employees and visitors is directed to an emblematic space that symbolizes the philosophy and working methods of the company: the conference room, which, in this case, contains a large table and has views of Park Avenue. The sculpted ceiling and this centrally located area for meetings and conferences are the heart of the project. This icon of the collective nature of the company is located amid a rigid system of columns that are used to organize the distribution of the offices. The work spaces are logically arranged so that all the employees, from directors to consultants and support personnel, can easily identify where they are. Areas for interaction between the employees are placed at strategic points within the system of offices and consist of small meeting rooms. In addition, the planned traffic pattern also promotes chance encounters so employees of all levels can easily relate to each other, despite the hierarchical structure of the company.

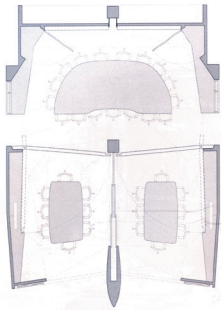
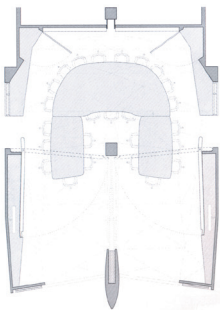
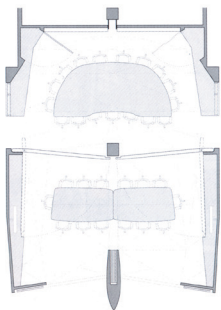
Materials used were concrete for the structure and framework, exposed on the floor and covered with plaster on the ceiling and walls; translucent glass and aluminum in the partitions; and maple wood on the cabinets and other furnishings.







Perspectives



Meeting room

